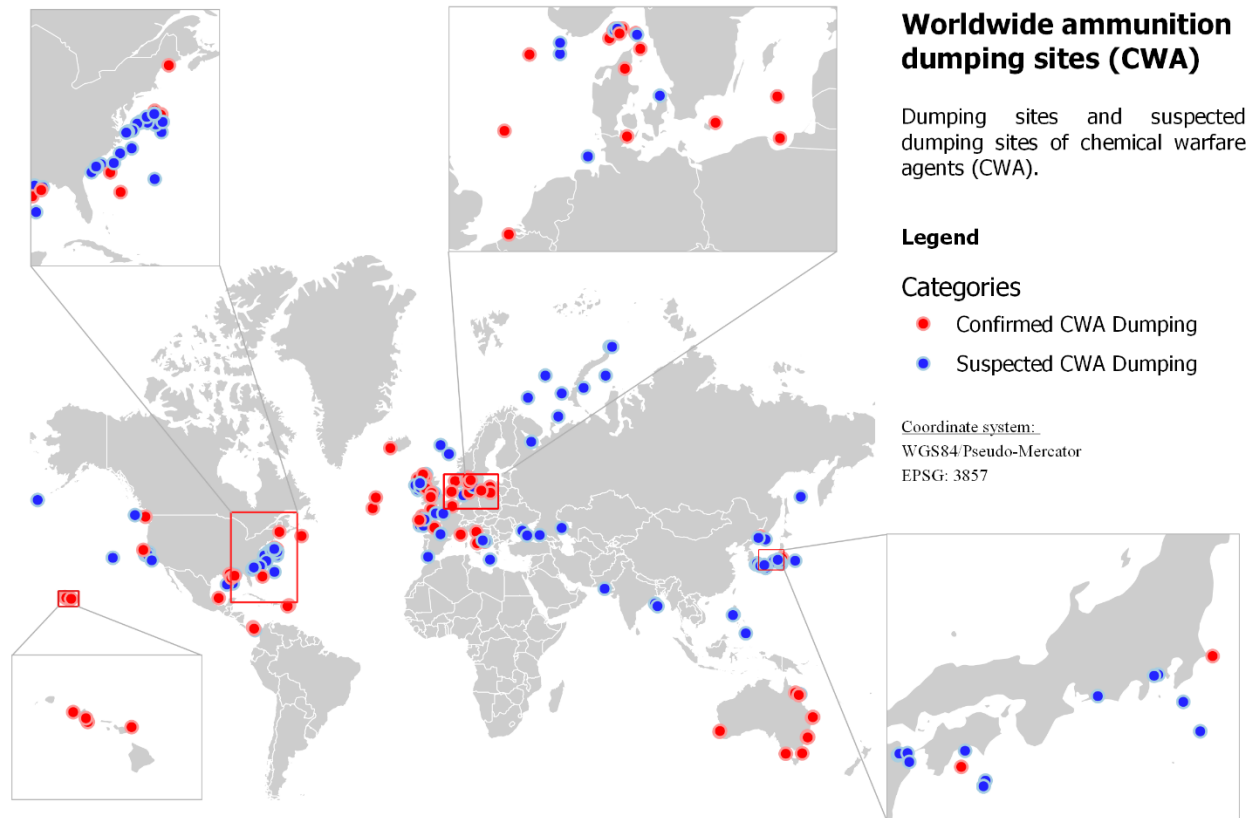


A Decade of Chemical Munitions Studies in the Baltic Sea and New Perspectives

JACEK BEŁDOWSKI

INSTITUTE OF OCEANOLOGY POLISH ACADEMY OF SCIENCES

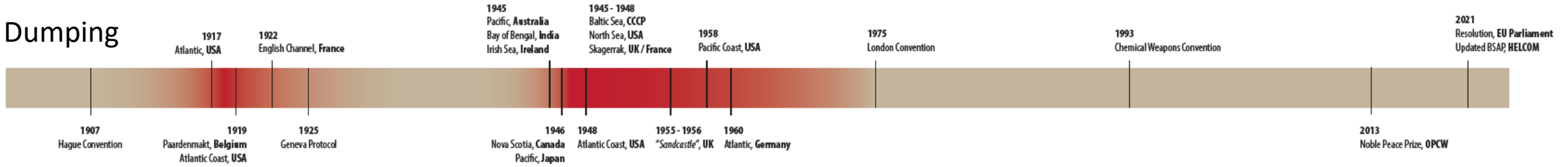
Dumped CWs



Source: International Ammunition Cadastre - AmuCad.org (2022/05/09)

Timeline

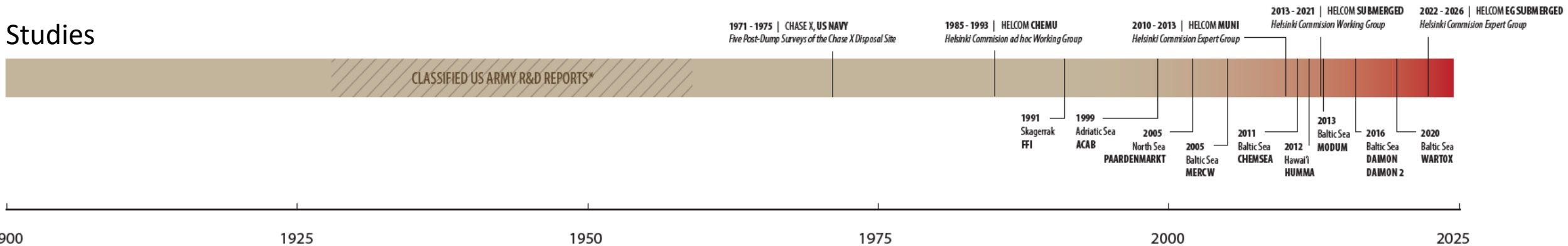
Dumping



Incidents



Studies



1900

1925

1950

1975

2000

2025

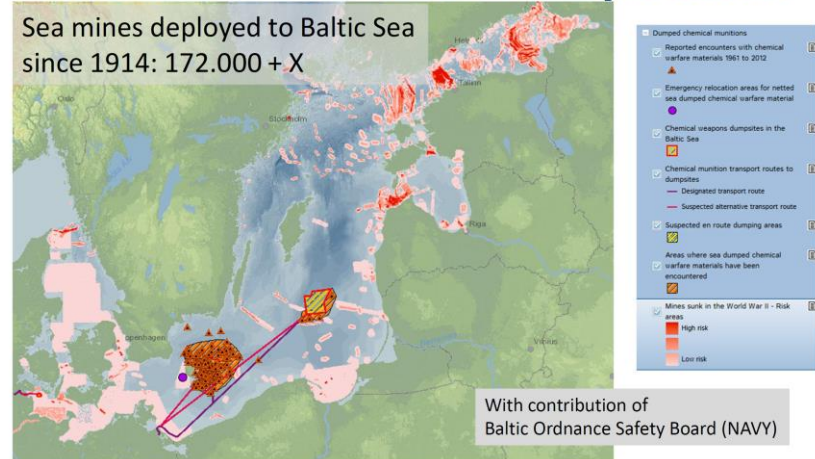


HELCOM involvement



Online: Map & Data Service

Chemical Munitions & Risk-Layer Mines



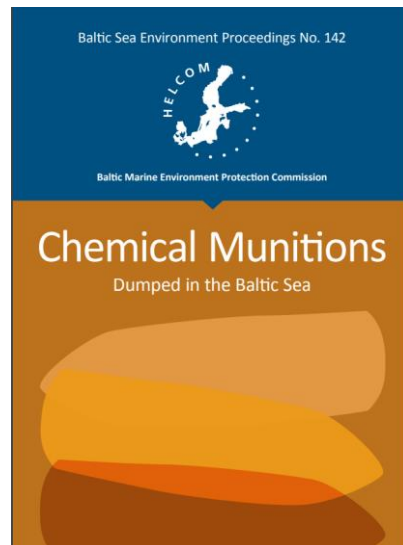
Baltic Sea Environment Proceedings No. XX

Chemical Munitions Dumped in the Baltic Sea

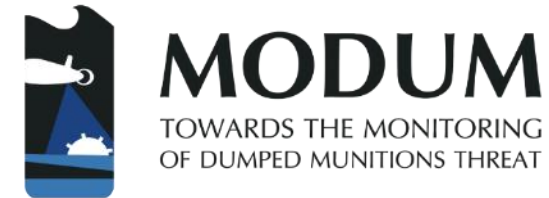
Report of the *ad hoc* Expert Group to Update and Review the Existing Information on Dumped Chemical Munitions in the Baltic Sea (HELCOM MUNI)



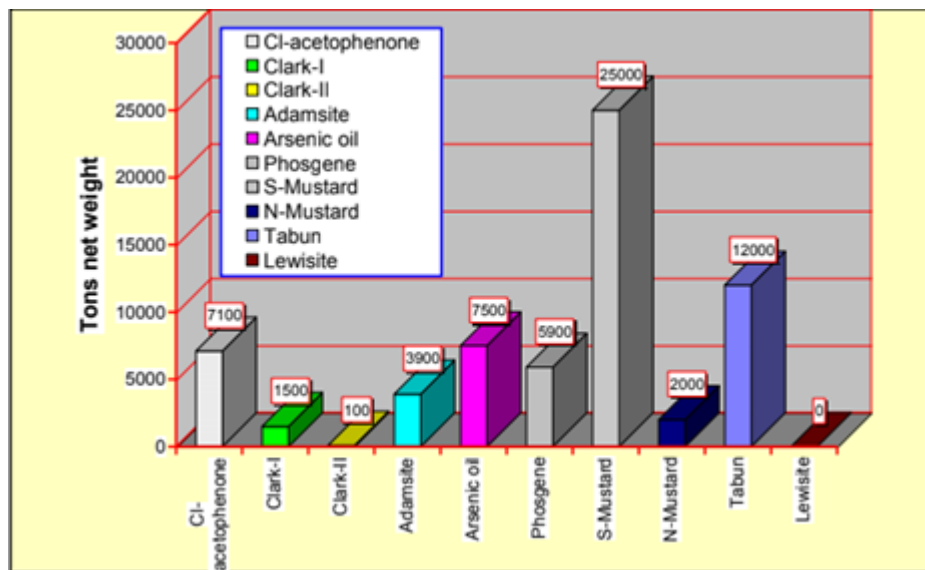
Helsinki Commission
Baltic Marine Environment Protection Commission



Situation of Baltic Sea dumped munitions

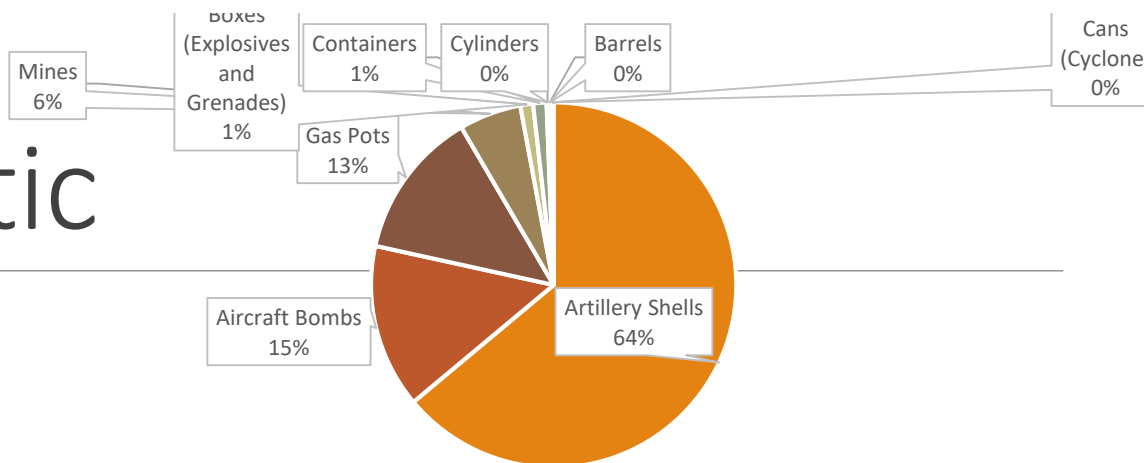


Munitions in the Baltic

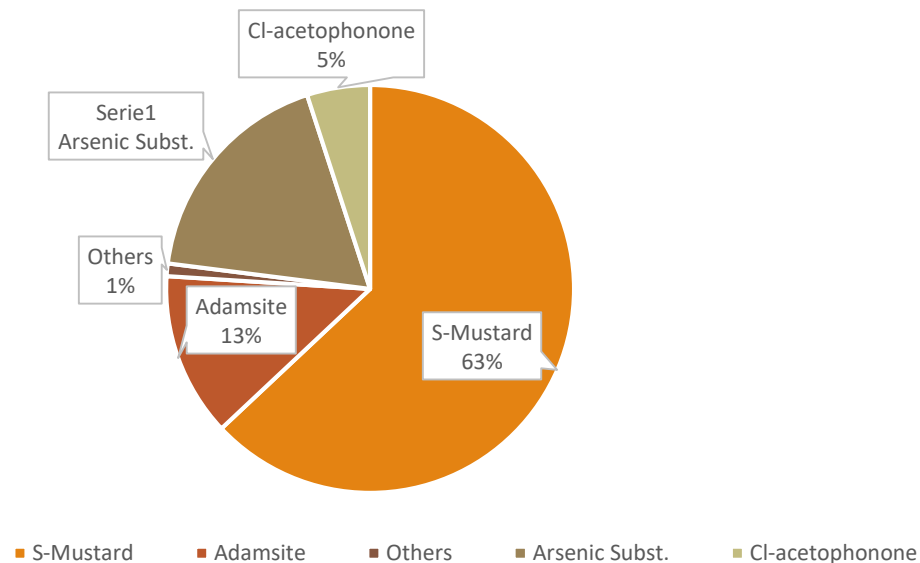


Stocks of German chemical warfare (CW) agents produced and accumulated before and during WW-II

Types and compounds dumped in the Baltic [%]

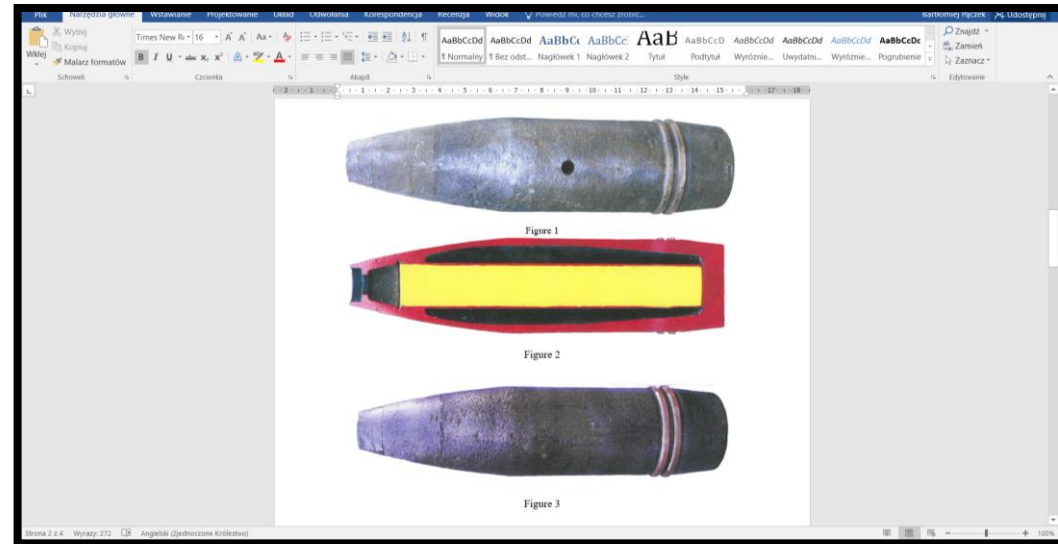
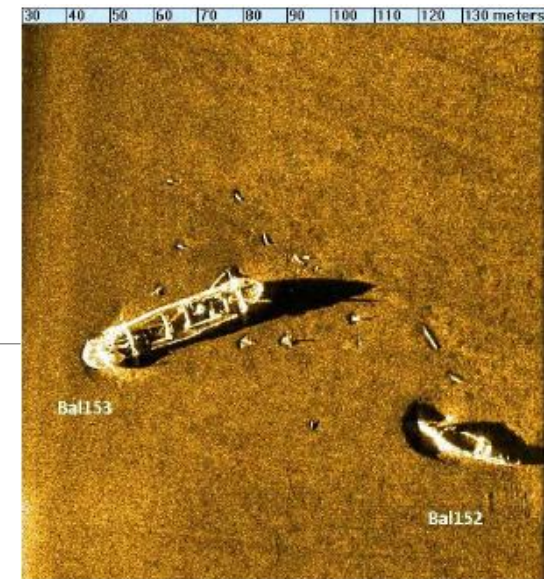
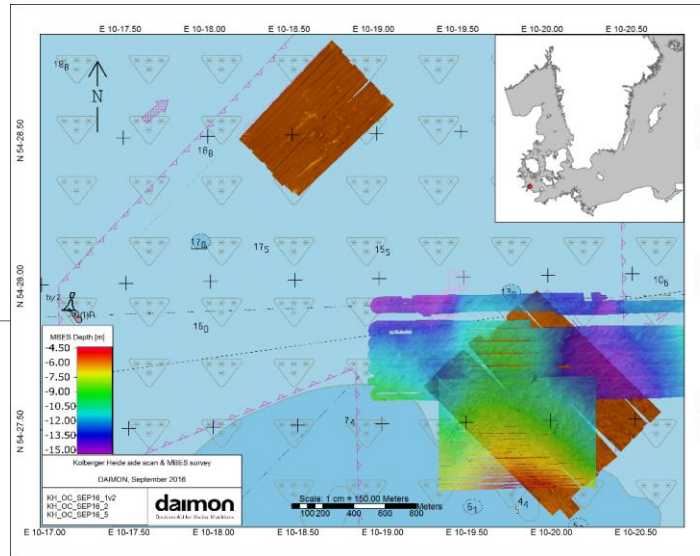
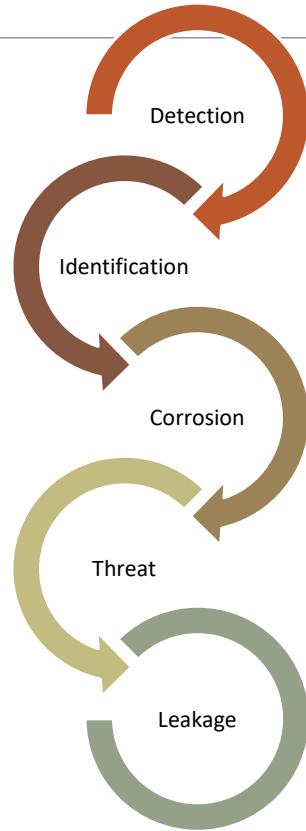


■ Artillery Shells
■ Aircraft Bombs
■ Gas Pots
■ Mines

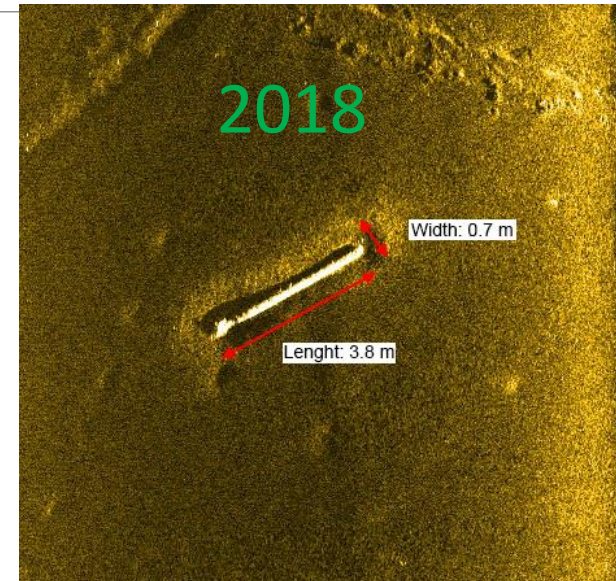
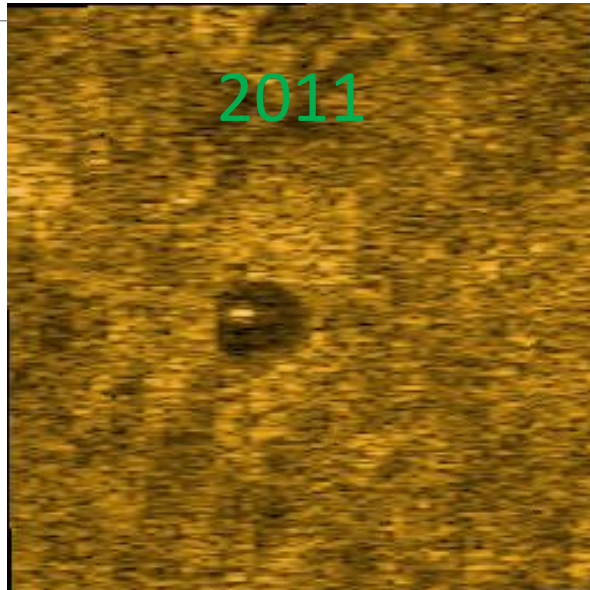


■ S-Mustard
■ Adamsite
■ Others
■ Arsenic Subst.
■ Cl-acetophenone

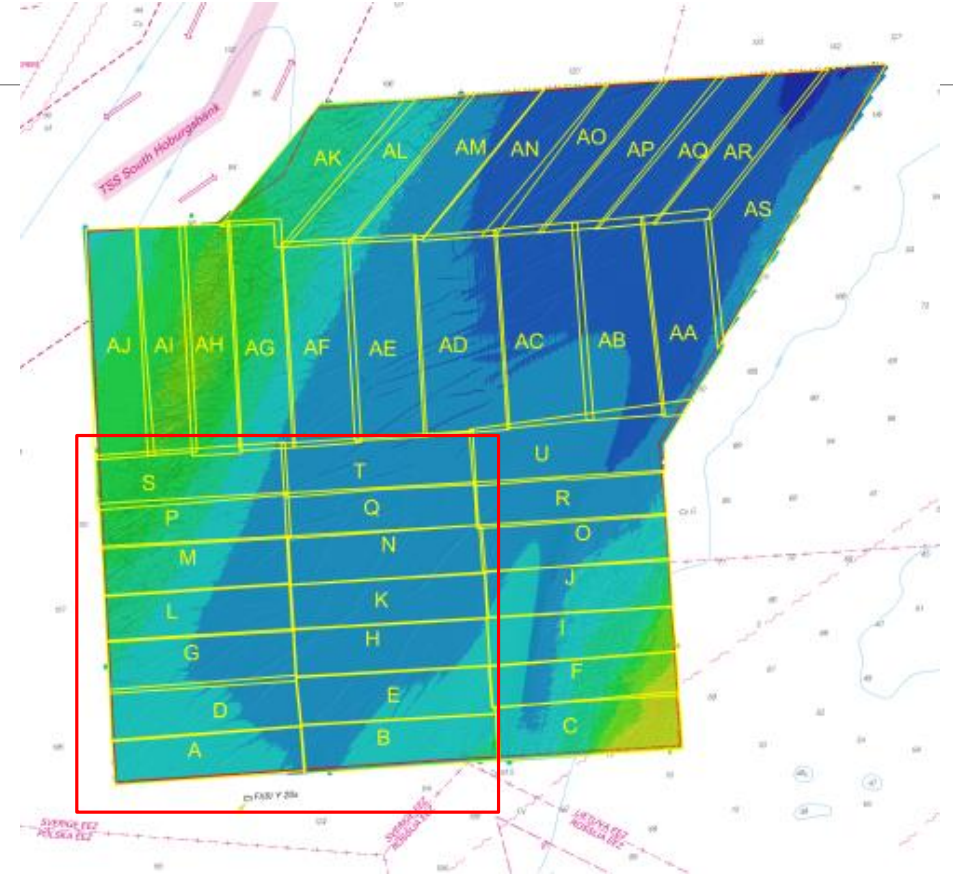
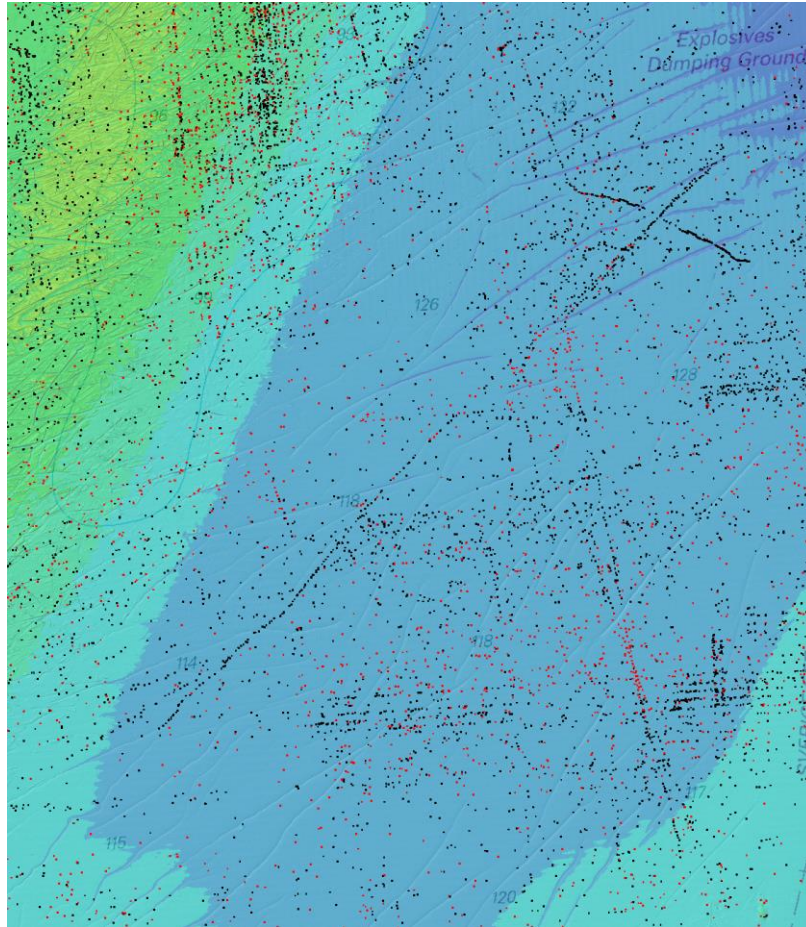
Munition Status



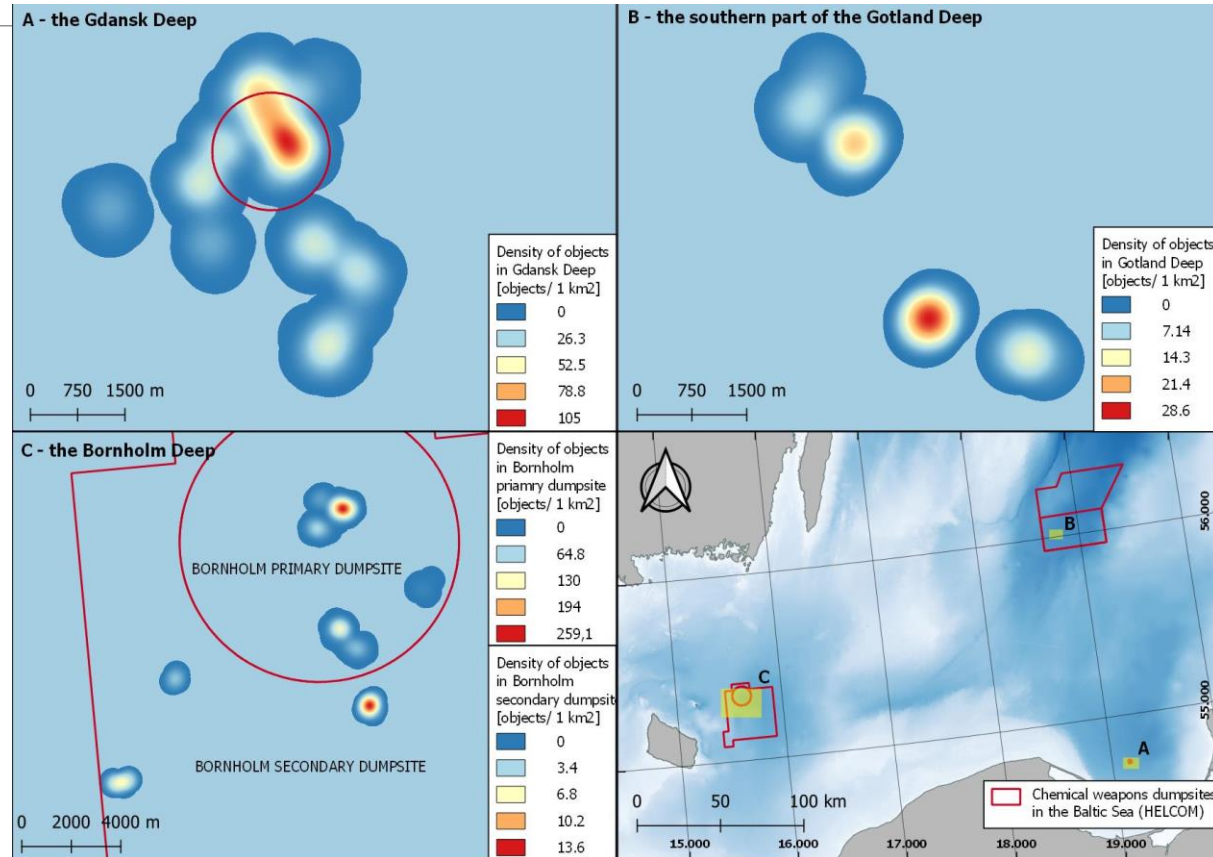
Sonar quality



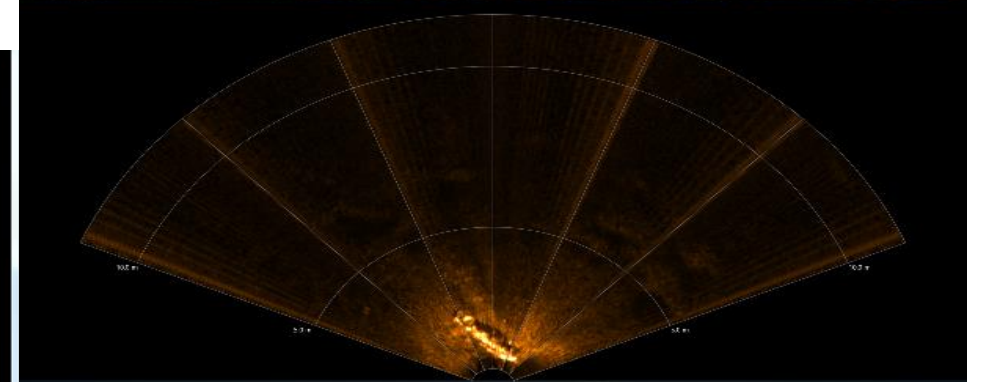
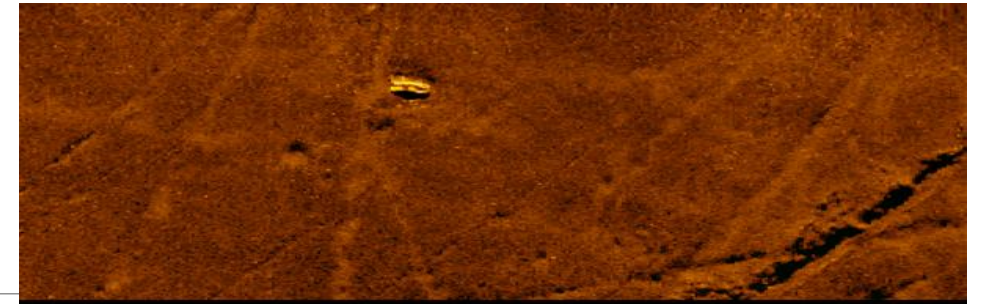
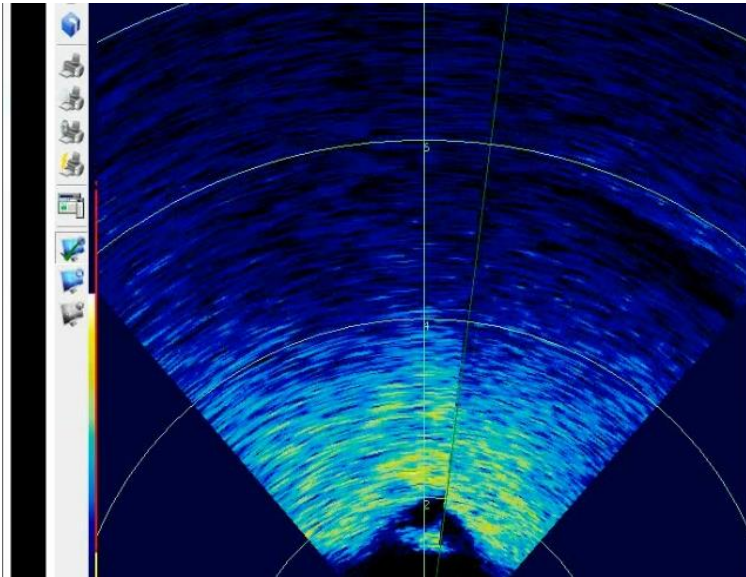
Detection – Gotland Deep



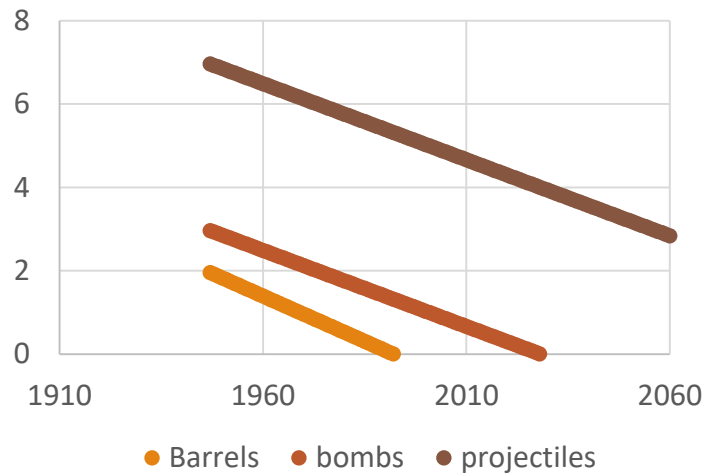
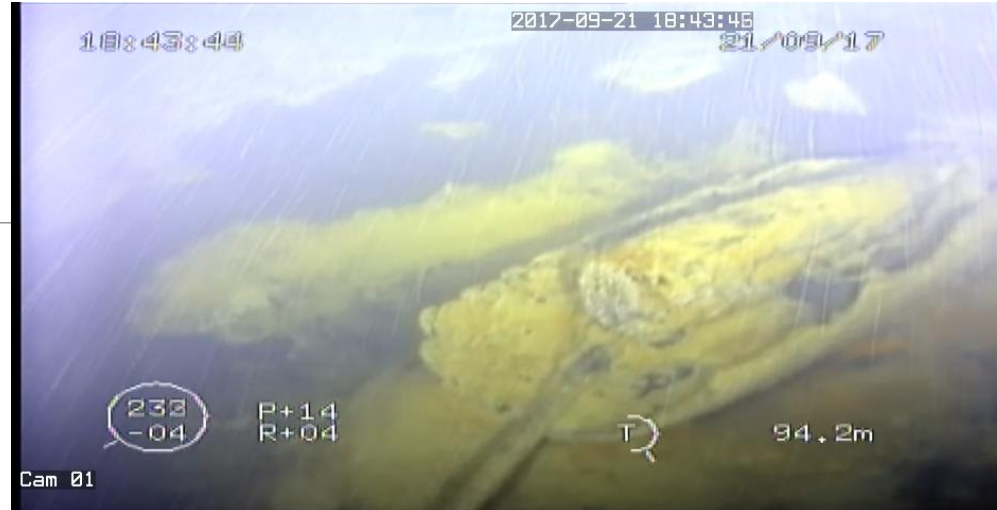
Density of objects



Identification



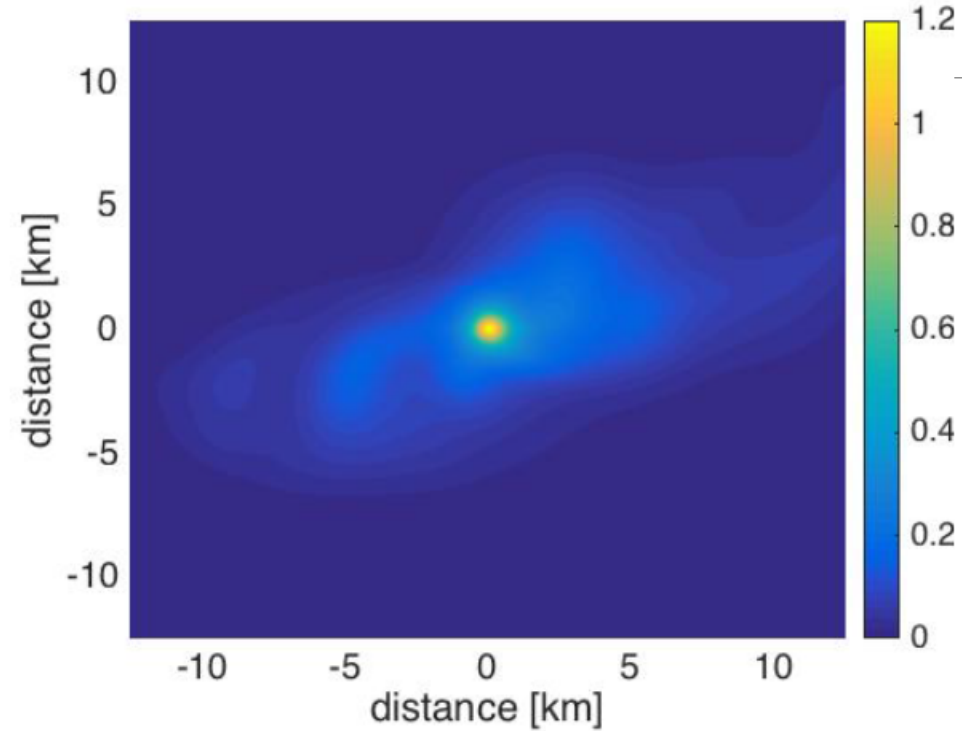
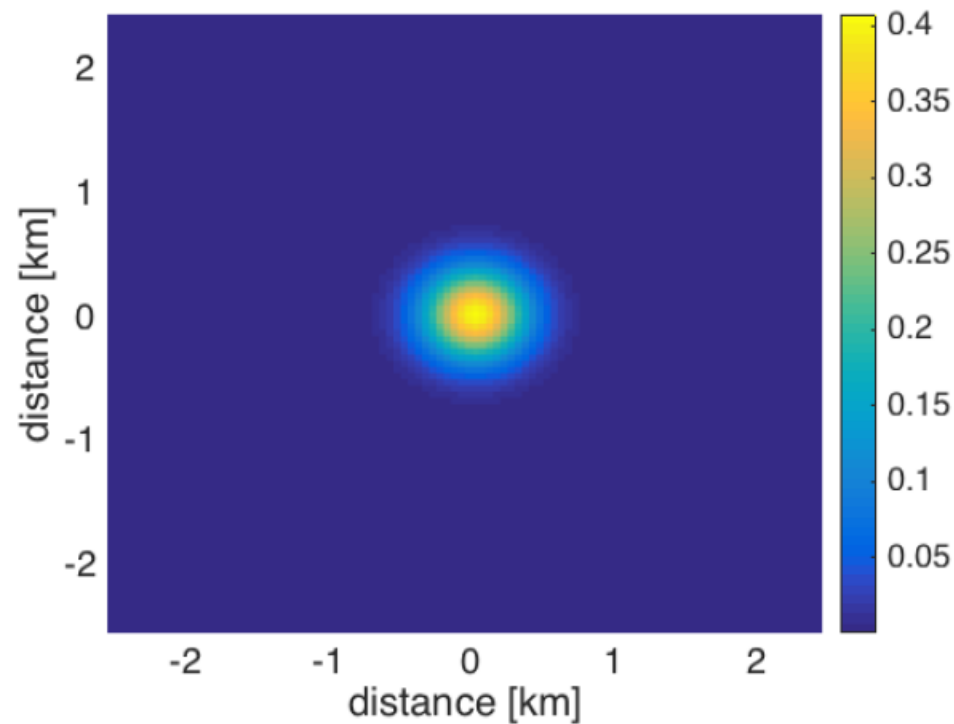
Corrosion



Barrels $V_k=0,0434$ mm/rok
Bombs $V_k=0,0365$ mm/rok
In sediments $V_k=0,0313$ mm/rok

Wall thickness:
Barrels 1.5 do 2 mm
Bombs 3 mm
Projectiles 5-7 mm

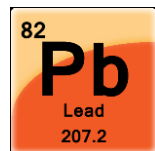
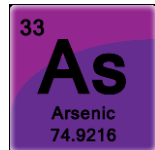
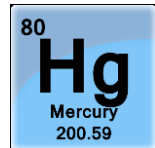
High Resolution Model (HRM)-Bornholm Deep (constant leakage)



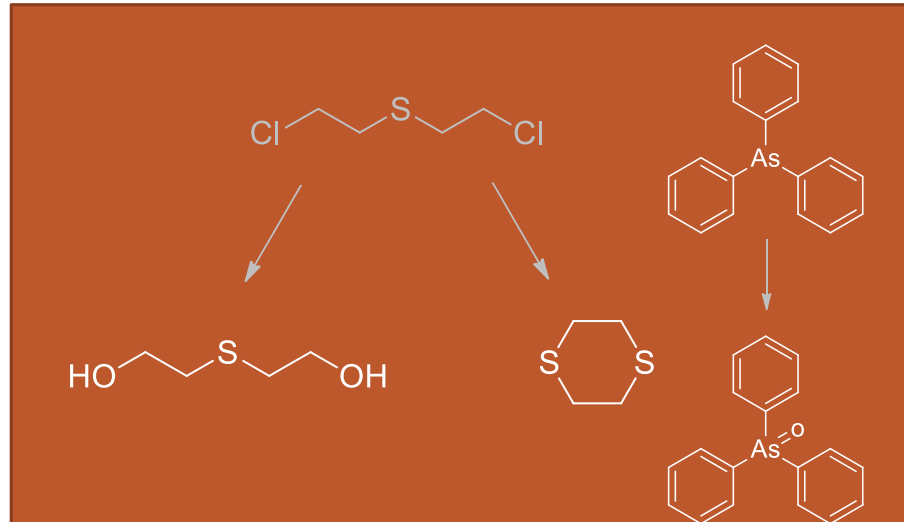
Initial state and situation after 5 days of estimated potential leakage. Horizontal and vertical axes represent distance in relative units. Color scale can be interpreted as the level of contamination.

Pollution of sediments and water

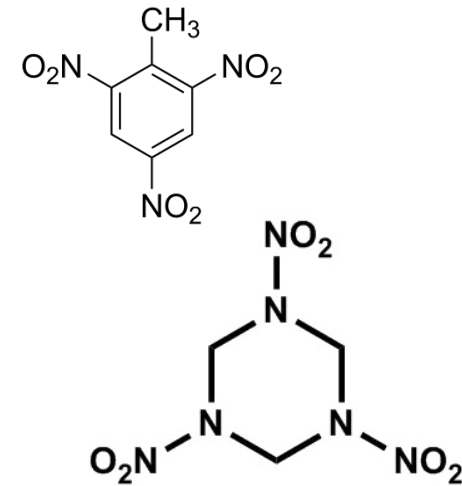
Metals



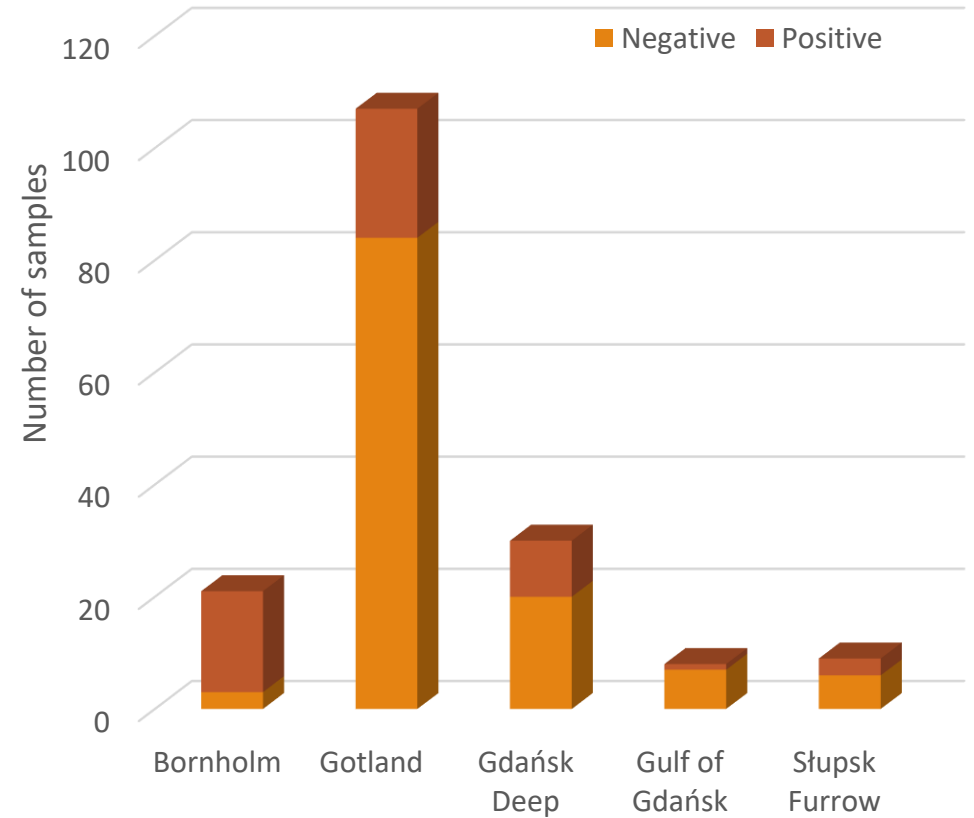
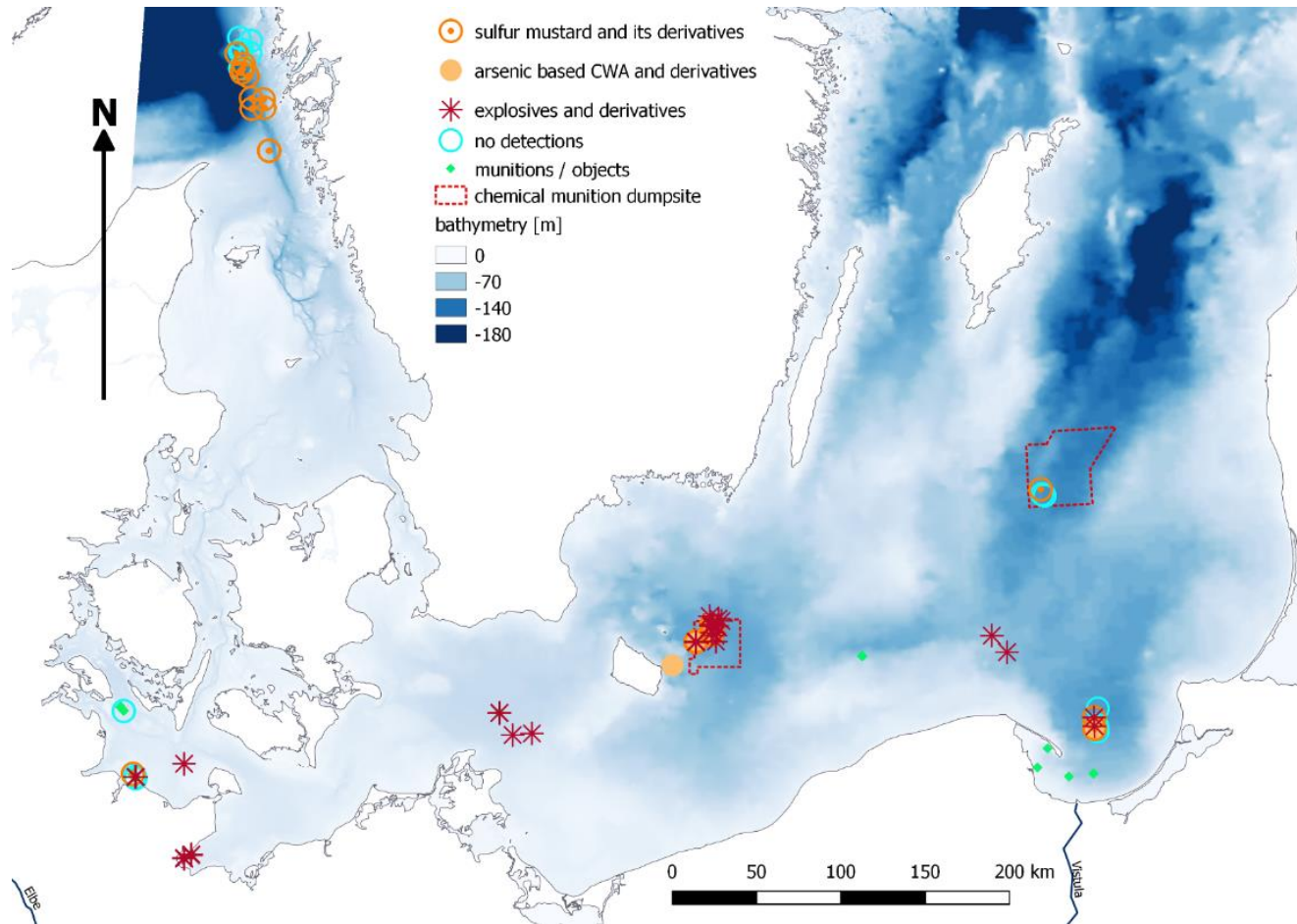
Chemical Warfare Agents



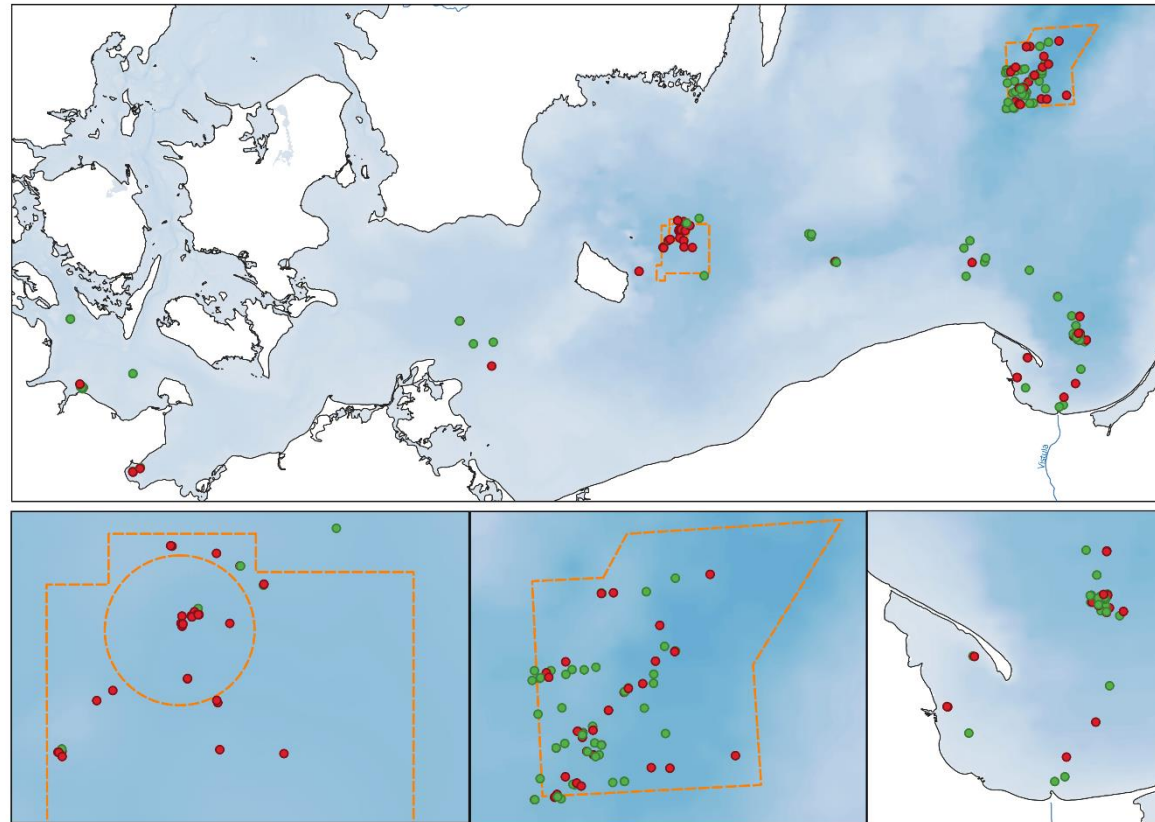
Explosives



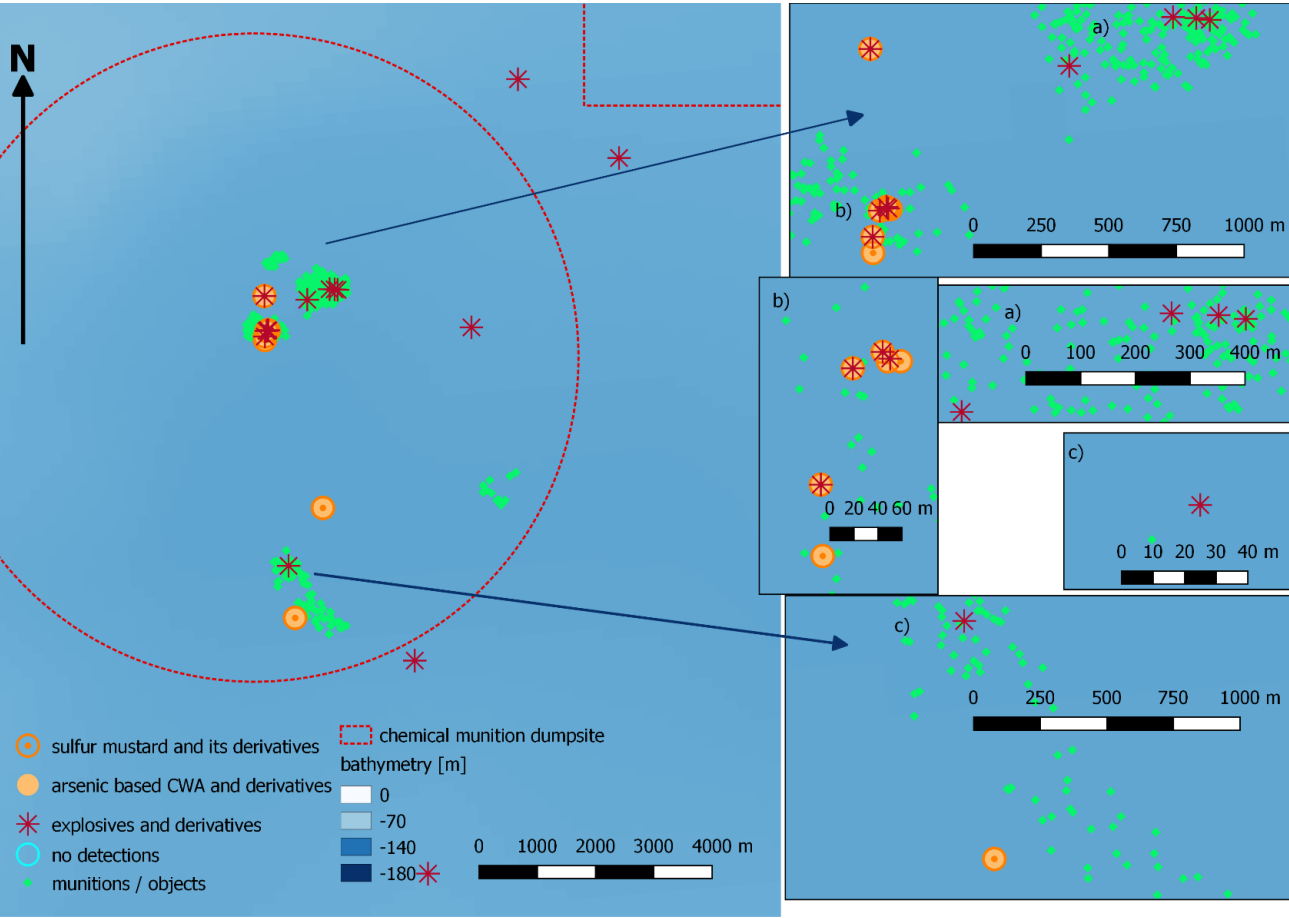
CWA and explosives



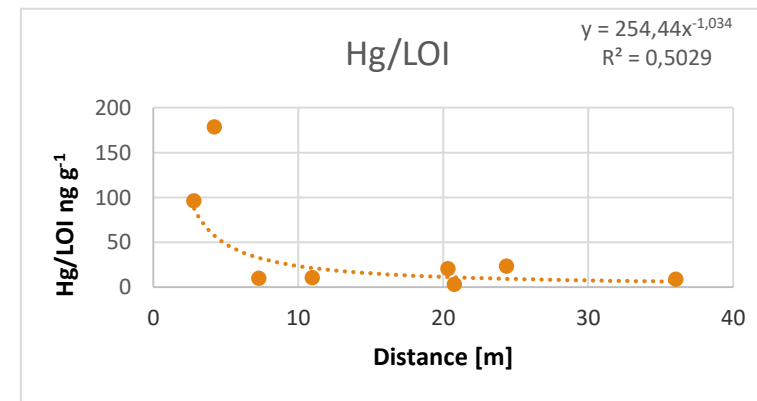
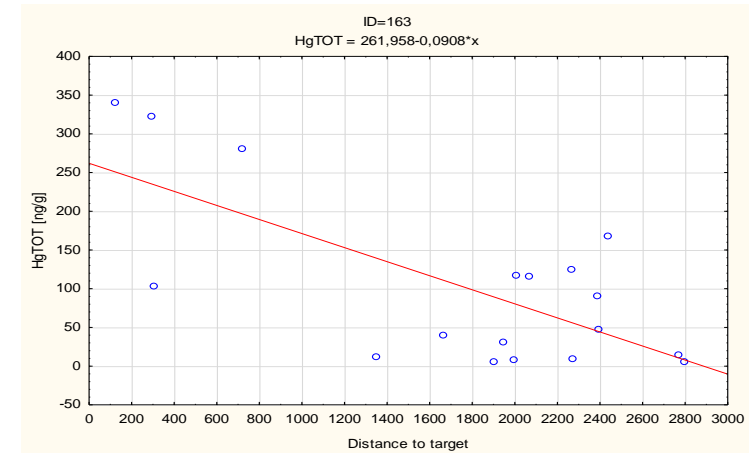
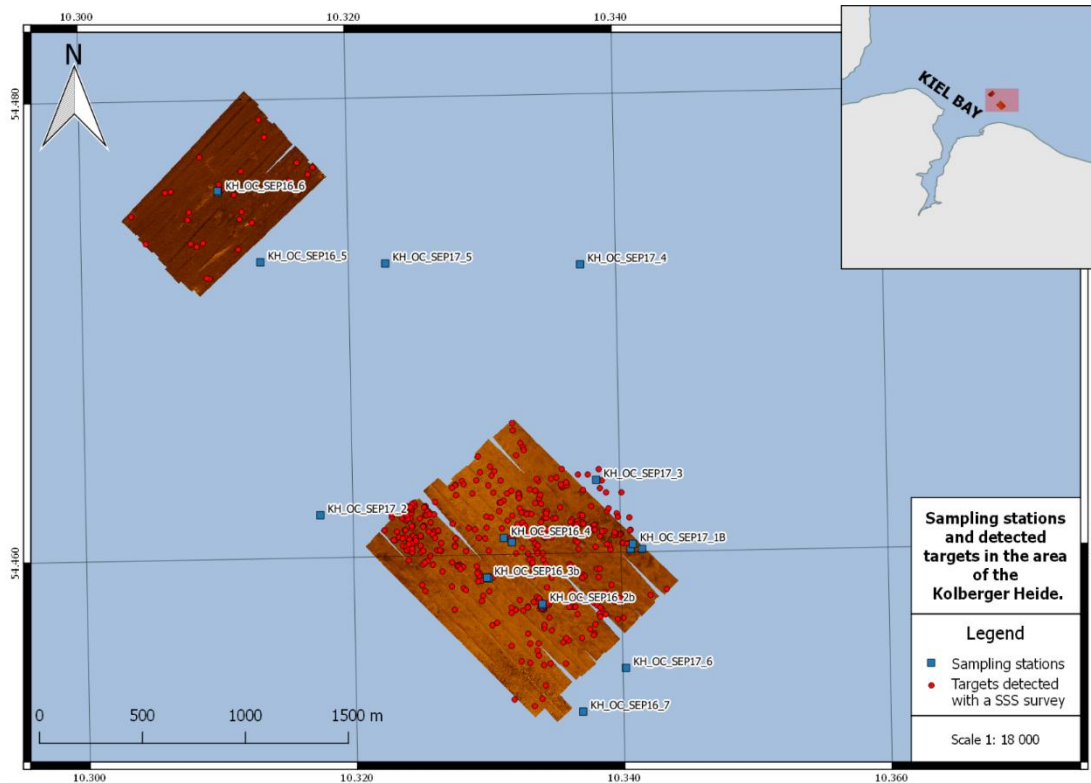
Positive CWA detections after 10 years



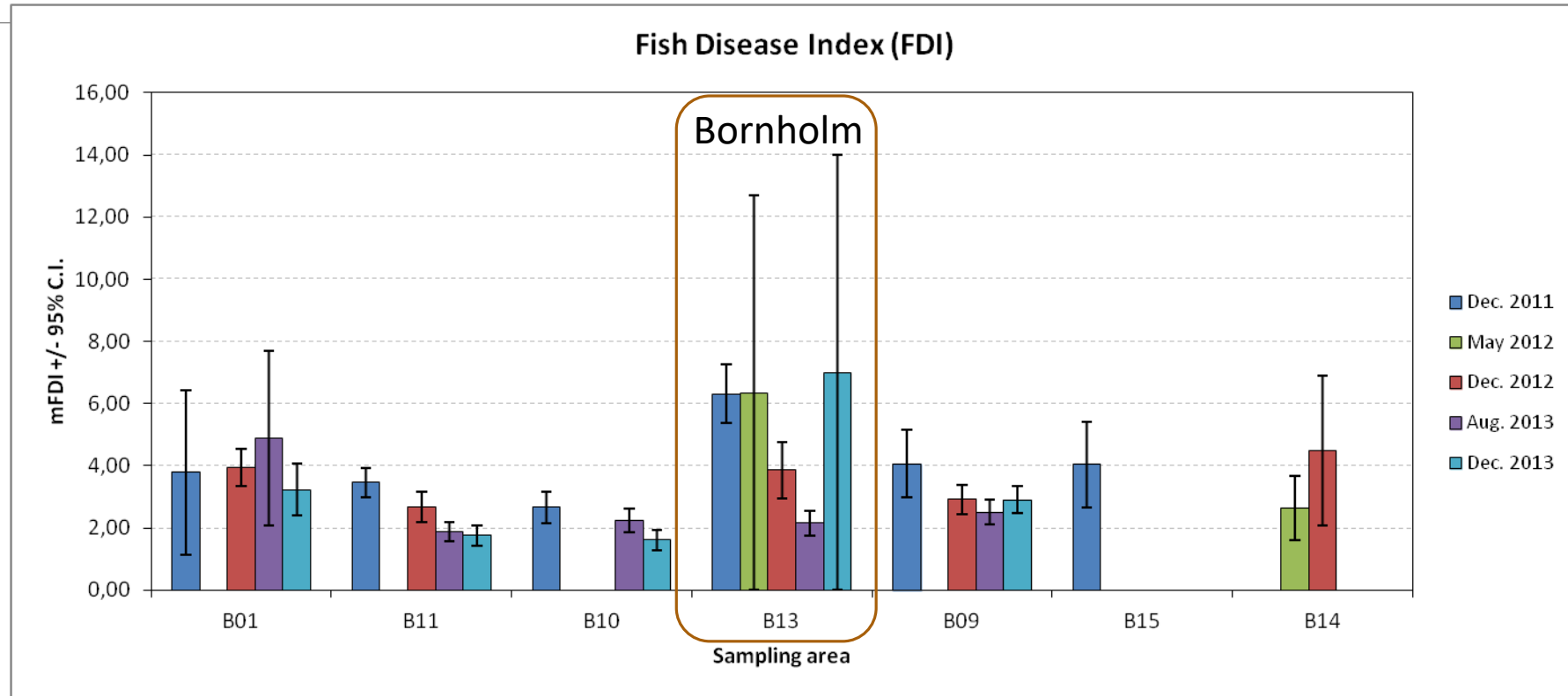
Bornholm Deep



Enrichment, range

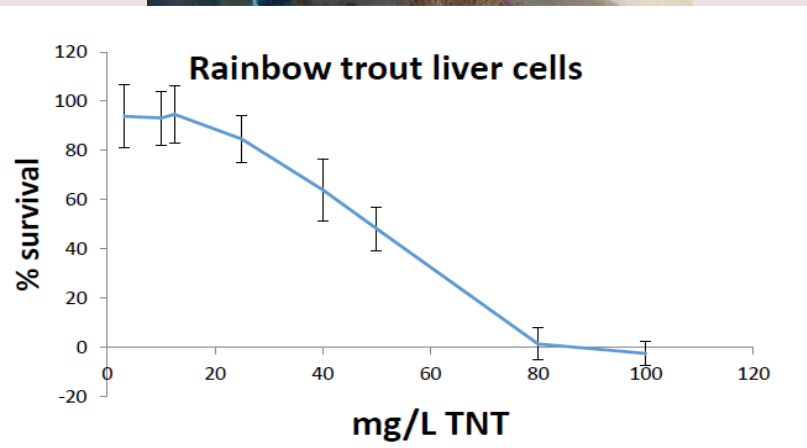


Impact on biota

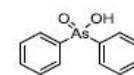
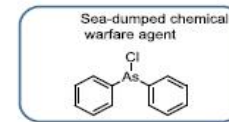


Impact

Toxicity

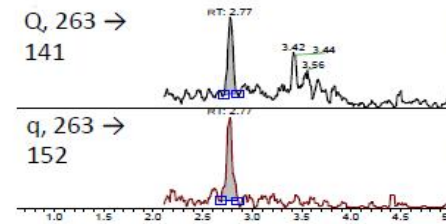


Bio accumulation



Q, 263 →
141

q, 263 →
152



Fish results

- 3 out 100 reference cod muscle contained TPAox
- No DPA detected from Bornholm reference area
- **13 % of studied cod muscle samples collected from Bornholm dumpsite have contained arsenic CWAs**
 - 20 % analysed cod liver samples have contained TPAox

Species	Sampling area	Number of samples	Muscle		Liver	
			DPA	TPAox	DPA	TPAox
Cod	Bornholm reference site B09	100	-	3/100	0/10	0/10
Cod	Bornholm dumping site B13	120	9/120	10/120	0/10	3/15
Saithe	Måseskär	9	NA	NA	0/9	0/9
Hagfish	Skagerrak (wreck 13)	20	10/20	19/20	NA	NA

Food web impact

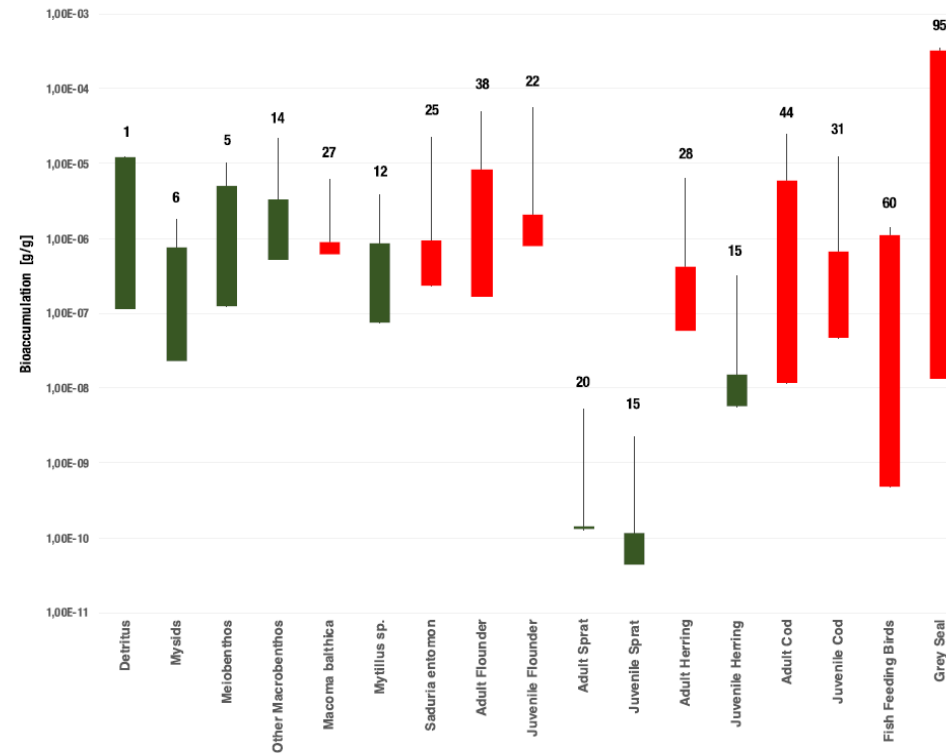
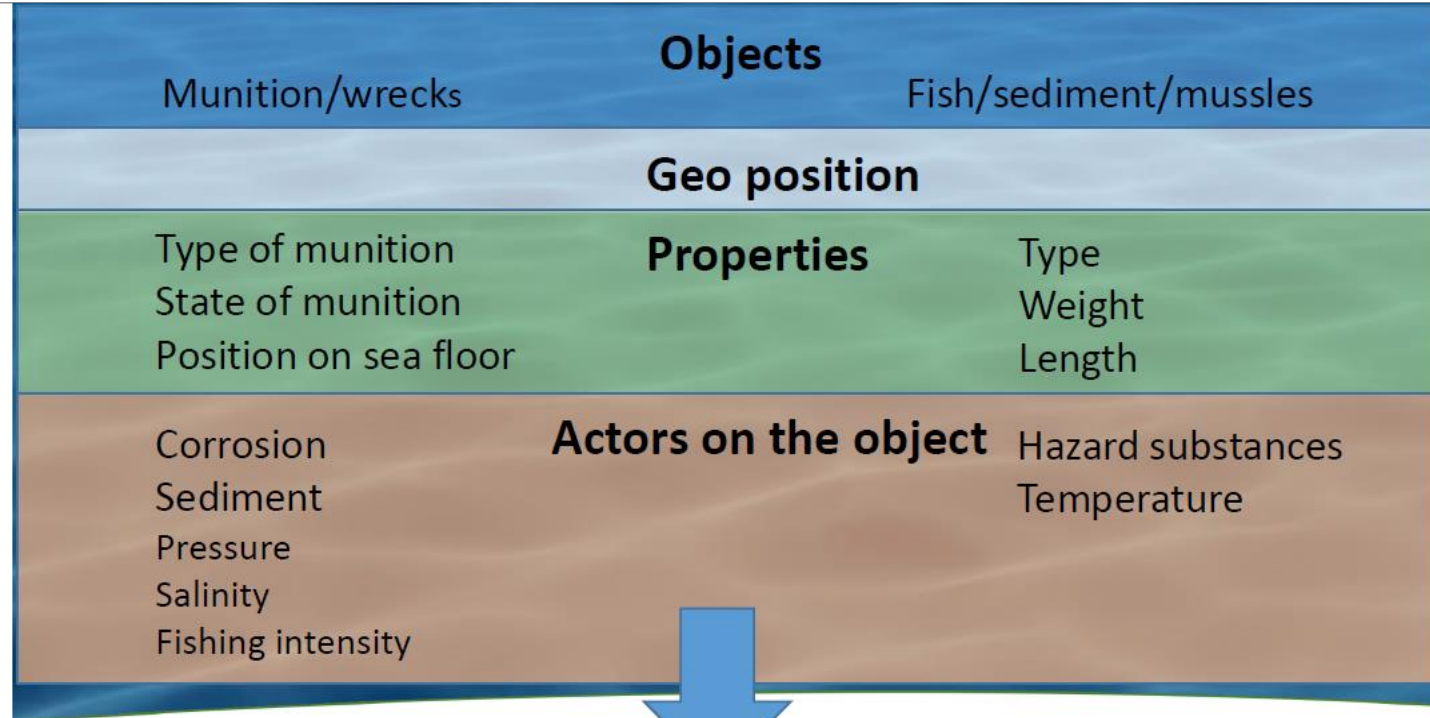


Figure 3.

Modelled t_0 , t_{end} and maximum concentrations of Clark I + degradation products in biota and detritus per 1 gram of biomass. Green color represents a decrease and red color an increase of concentration during 10 years from leakage. Numbers above each box represent the months when maximum concentrations occurred.

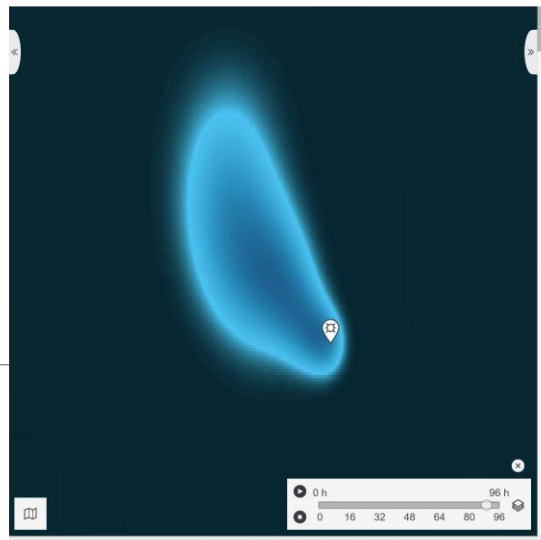
DSS

www.daimonproject.com



State of hazardness

Models and reports

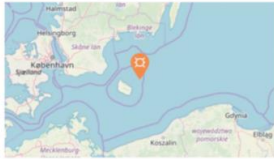


DECISION SUPPORT REPORT

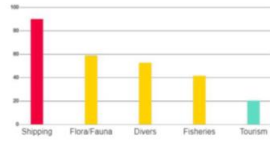
DECISION SUPPORT REPORT - AMMUNITIONS

JWendt Environmental Geographic Solutions 2016-10-21, 02:00
 15.4138184, 55.2744218

OVERVIEW

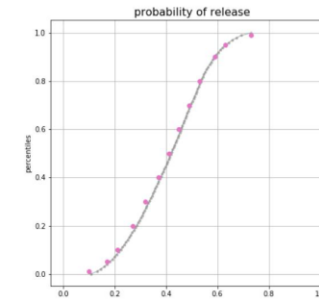
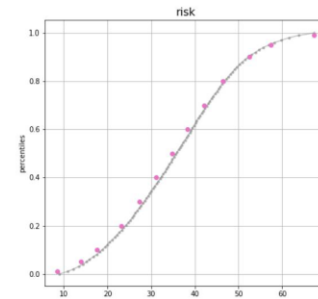
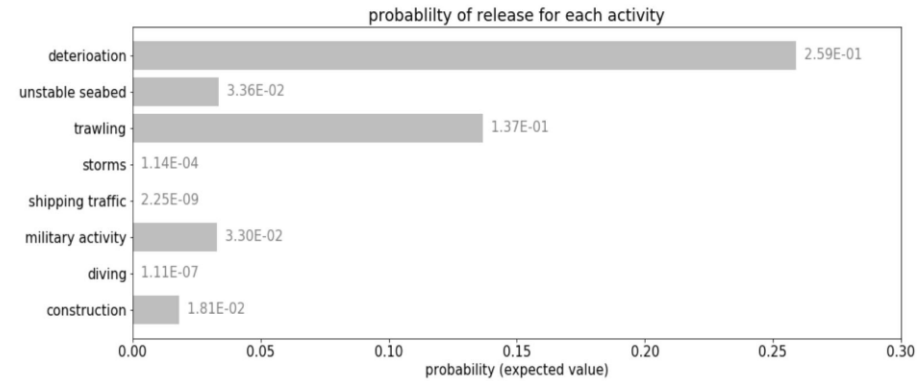
Coordinates 15.4138184, 55.2744218	Geometry type Point	
Data, Time 2016-10-21, 02:00	Description	

TOP 5 RISKS - EXPLOSION

	<table border="1" style="font-size: small;"> <thead> <tr> <th>Protection Good</th> <th>Risk</th> <th>Training-Datasets</th> </tr> </thead> <tbody> <tr><td>Shipping</td><td>89</td><td>27</td></tr> <tr><td>Flora/-Fauna</td><td>58</td><td>21</td></tr> <tr><td>Divers</td><td>52</td><td>69</td></tr> <tr><td>Fisheries</td><td>41</td><td>93</td></tr> <tr><td>Tourism</td><td>20</td><td>43</td></tr> </tbody> </table>	Protection Good	Risk	Training-Datasets	Shipping	89	27	Flora/-Fauna	58	21	Divers	52	69	Fisheries	41	93	Tourism	20	43
Protection Good	Risk	Training-Datasets																	
Shipping	89	27																	
Flora/-Fauna	58	21																	
Divers	52	69																	
Fisheries	41	93																	
Tourism	20	43																	

TOP 5 RISKS - CORROSION

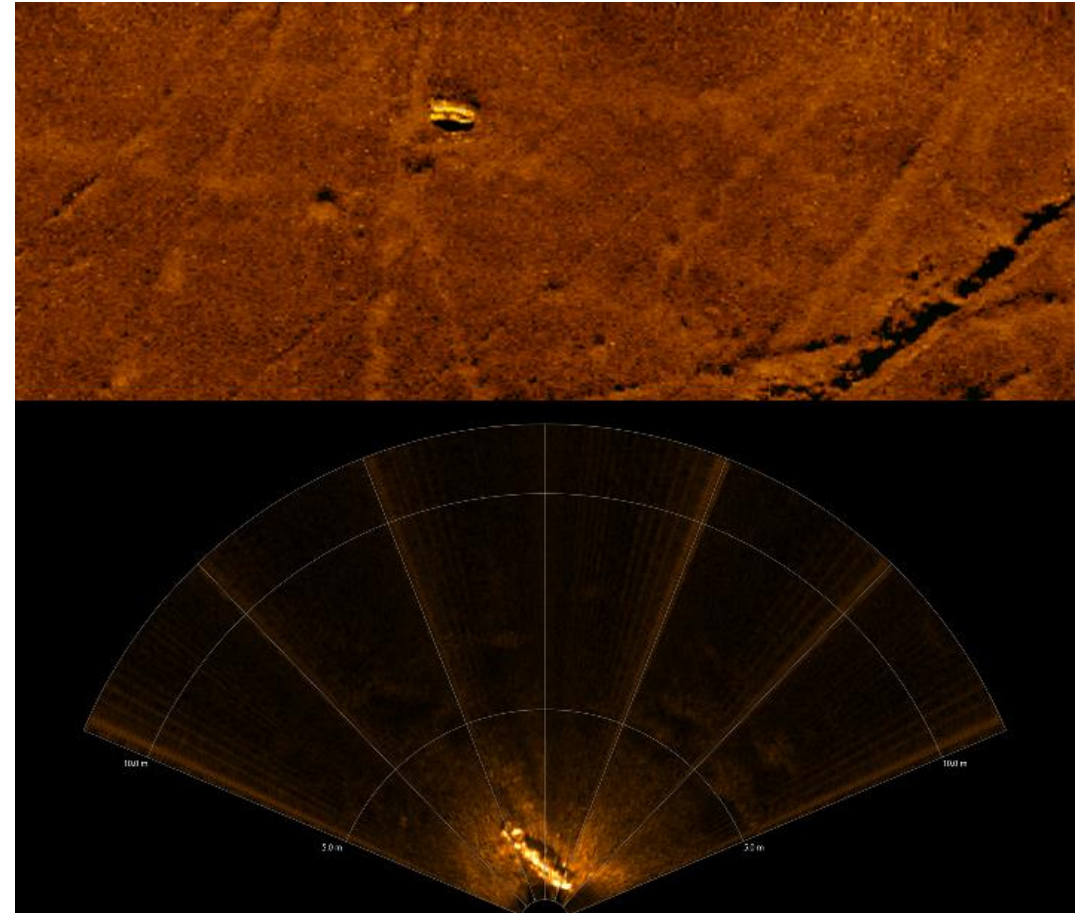
VRAKA-CWA





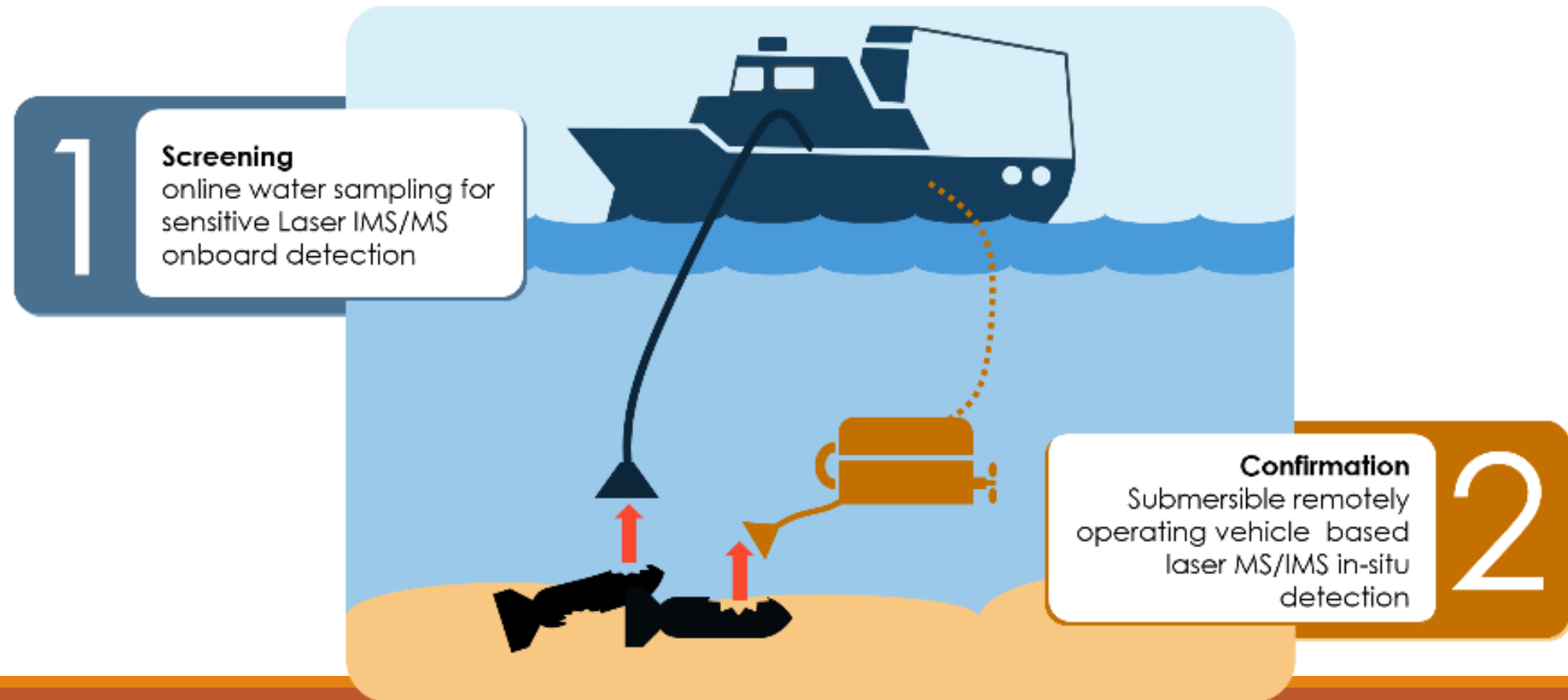
Complete Scene recognition

- Object modeling
- Bottom image
- Bottom properties
- Bayesian AI for best remediation



AMMOTRACE

AMMOTRACe – Marine **ammunition** dump site exploration by surface- and underwater-based laser mass spectrometric **tracing** technology



EROVMUS- Enhanced ROV for Munition Studies



Better ROV










Improved control



Easier piloting

Partners:

-  IOPAN
-  OceanTech
-  GEOECOMAR
-  CUTEC (Claustahl)
-  QVITEC
-  VLIZ
-  Harbor of Oostende

MAMON



mooring platform – intelligent buoys

Biota based indicators

In situ Mass Spec

Passive samplers

Flux chambers

Environmental sensors

Water and sediment transport



SEE YOU SPACE COWBOY...

